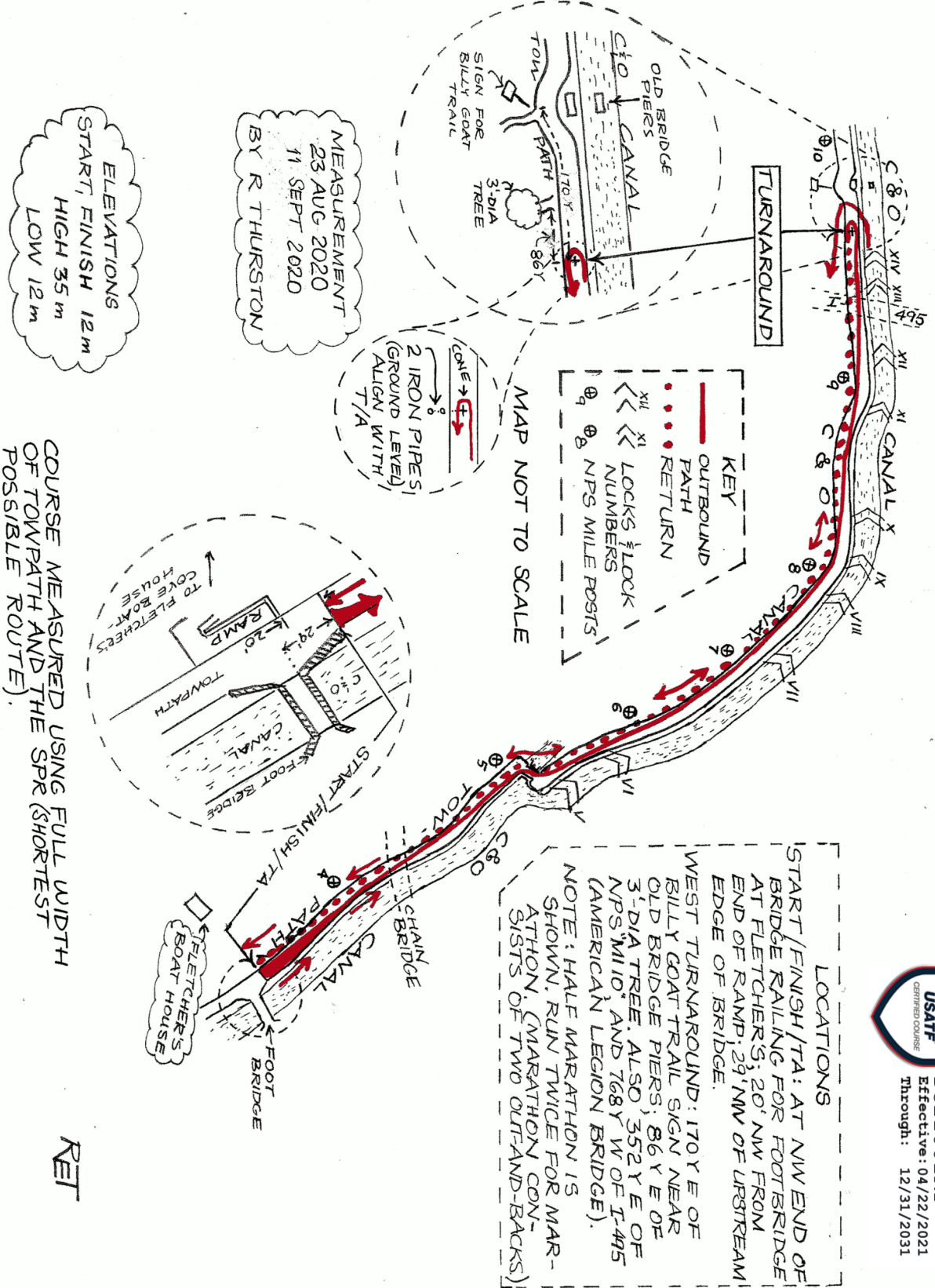




POTOMAC RIVER MARATHON & HALF MARATHON
WASHINGTON, DC



USATF Certificate
DC21001RT
Effective: 04/22/2021
Through: 12/31/2031

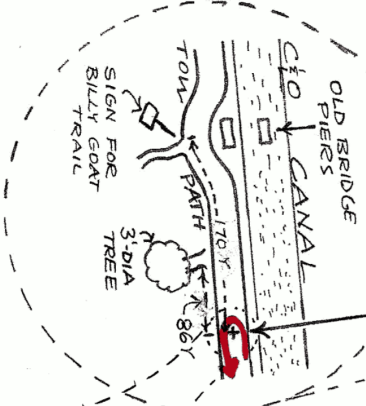


KEY

- OUTBOUND PATH
- RETURN
- ⏪ XI LOCKS & LOCK NUMBERS
- Ⓜ NPS MILE POSTS

MAP NOT TO SCALE

2 IRON PIPES (GROUND LEVEL) ALIGN WITH T/A

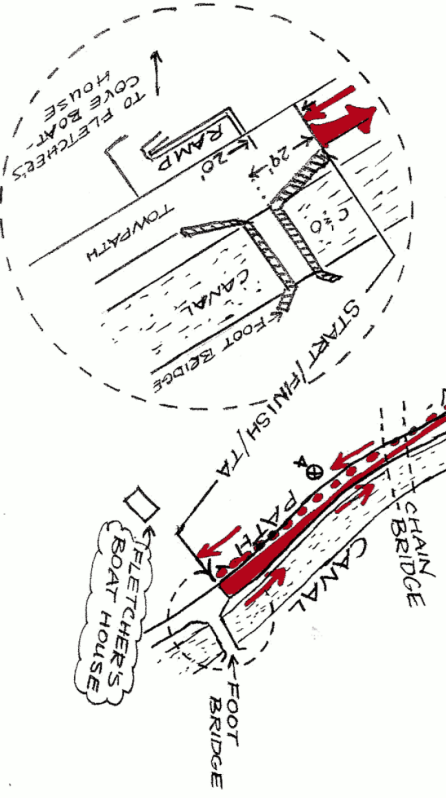


LOCATIONS

START / FINISH / T/A: AT NW END OF BRIDGE RAILING FOR FOOTBRIDGE AT FLETCHER'S; 20' NW FROM END OF RAMP, 29' NW OF UPSTREAM EDGE OF BRIDGE.

WEST TURNAROUND: 170 Y E OF BILLY GOAT TRAIL SIGN NEAR OLD BRIDGE PIERS; 86 Y E OF 3-DIA TREE. ALSO, 352 Y E OF NPS "M110" AND 788 Y W OF T-495 (AMERICAN LEGION BRIDGE).

NOTE: HALF MARATHON IS SHOWN. RUN TWICE FOR MARATHON. (MARATHON CONSISTS OF TWO OUT-AND-BACKS)



ELEVATIONS
START, FINISH 12m
HIGH 35m
LOW 12m

MEASUREMENT
23 AUG 2020
11 SEPT 2020
BY R THURSTON

COURSE MEASURED USING FULL WIDTH OF TOWPATH AND THE SPR (SHORTEST POSSIBLE ROUTE).

RET